

Altrincham and District Natural History Society

Sightings 2019 - From the Altnats Facebook Page

Tuesday 15th April 2019 – Altnats Evening Walk to Hale Barns/Bollin Valley



'Big bud gall' on Hazel. Caused by gall mites.



Last of flower and first of fruit on Field Maple.



Fringe Cups. A Saxifrage.



Wood Avens. Very lush foliage.



Green-veined White Butterfly. I cannot distinguish the upper wing from a Small White, but I think I saw the underside.



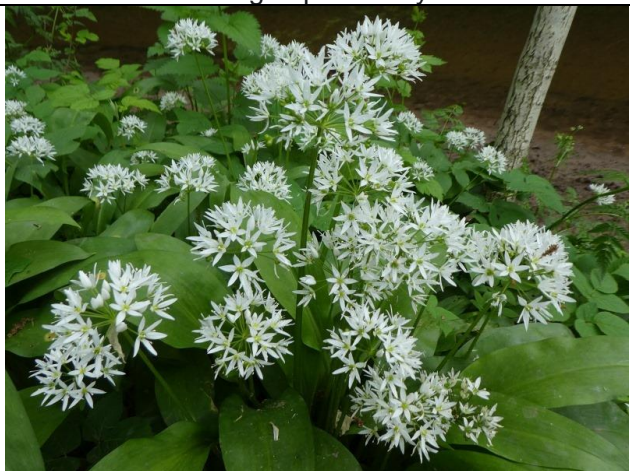
Orange-tip Butterfly.



Orange-tip Butterfly.



Pink Purslane.



Wild Garlic.



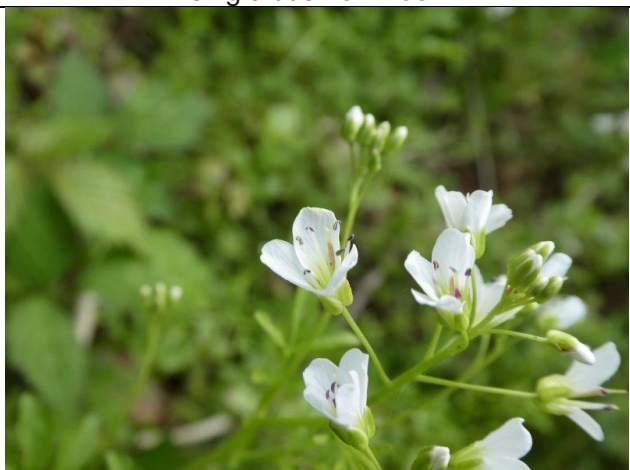
Greater Stitchwort.



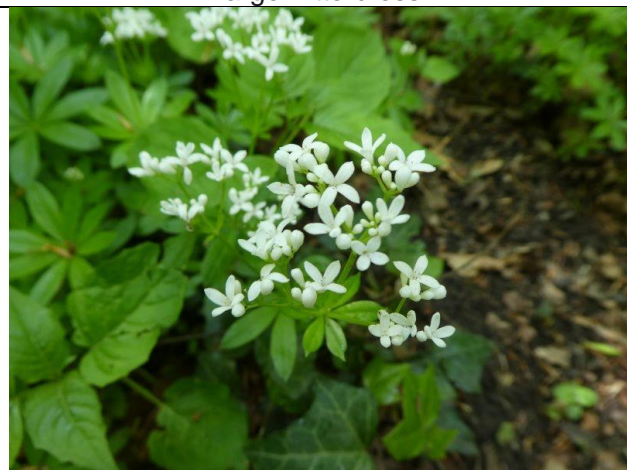
A single bush of Broom.



Large Bittercress.



Large Bittercress.



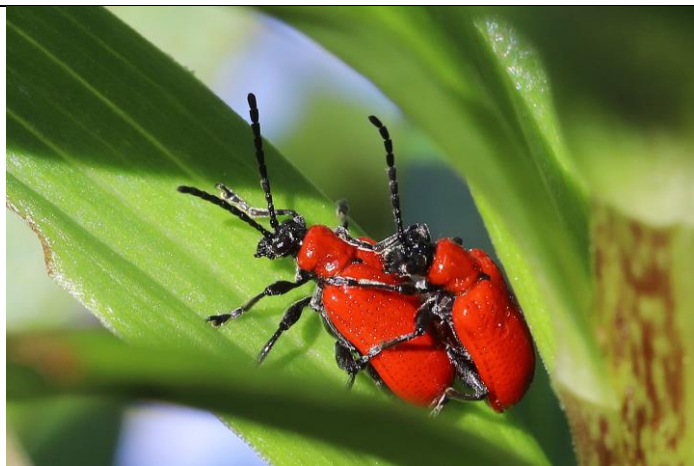
Sweet Woodruff. A good indicator of ancient woodland.



Sweet Woodruff. The largest patch we have seen for a while.

Saturday 11th May 2019 – Appleton, Warrington (Mike Ashworth)

Today's post has a theme, along the lines of "Even educated fleas do it"



Scarlet Lily Beetles, *Lilioceris lili*, I know you gardeners will be screaming, but I find that my lilies grow just fine AND the beetles have their chance to make a living too - live and let live.



The Green Dock Beetles, *Gastrophysa viridula*, are out in force at this time of year. Examine any Dock leaves and you will likely find the adults, as here, or the eggs or larvae



Ah those alien invaders, nothing to be done now but admire them, Harlequin Ladybirds, *Harmonia axyridis*



The sun-loving hoverflies, *Helophilus pendulus*



Coreus marginatus is commonly known as the Dock Bug as it feeds on the leaves and seeds of docks and sorrel



The Green Shield Bug, Palomena prasina

Thursday 6th June 2019 – Victoria Station (Jacky Johnson)



Jacky Johnson: Having a coffee on Victoria Station today when this little beauty landed. Can anyone say if this is a female Beautiful Demoiselle, it does not look green enough to be a Banded.

Mike Pettipher: Amazing, Jacky! Do you think it chose this shirt deliberately? I think it is female - brownish wings and with a white spot near the tip. Would be interesting to know if there is suitable habitat nearby, and thus more of them around (or whether it was waiting for a train/tram to take it to such).

Jacky: Victoria Station is quite close to the River Irwell (which is much cleaner these days) I think the canal runs somewhere nearby as well.

Mike Ashworth: Great spot Jacky! Female demoiselles are very difficult to tell apart, but I'm pretty sure this is the Banded Demoiselle. The only reliable character I have read about is the location of the white wing spots. For the Banded they are close to the wing tip, like yours, for the Beautiful not so close. Specifically for the Beautiful female the distance between the wingspot and the wingtip should be greater than a quarter of the distance between the wingspot and the node!

Saturday 22nd June 2019 – Altnats Day Excursion to Moses Gate Country Park/Nob End

An excellent day at Moses Gate Country Park/Nob End, Saturday 22nd June 2019. Enhanced and enlivened significantly by young, new blood, who provided much additional expertise.



Marsh Yellow-cress. Thanks to Liz and Cathy for id.



River Irwell and Giant Hogweed



Early Marsh Orchid



Common-spotted? Orchid



Marsh Helleborine



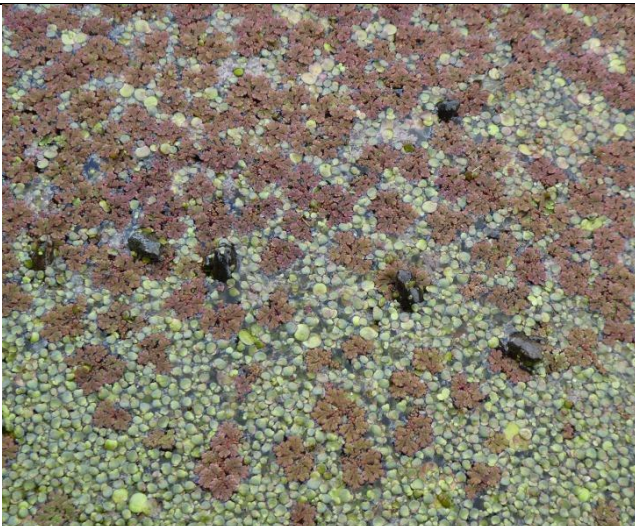
5-spot? Burnet Moth



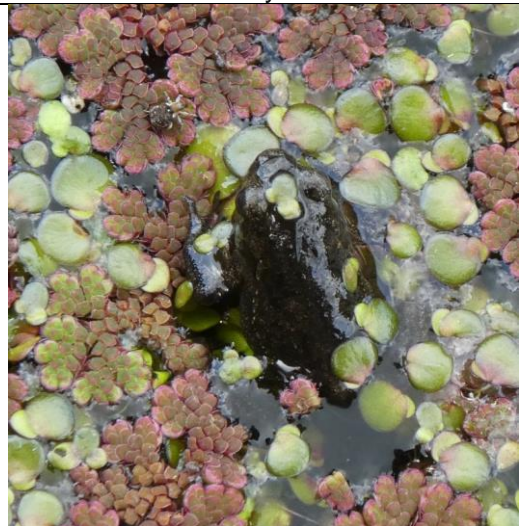
Blue-eyed Grass (not a grass!)



Azolla invading a section of the (former) Manchester, Bolton and Bury canal.



Azolla - an invasive fern from the US, along with some native duckweed. The dark blobs are froglets, of which there were many.



Froglet with nearby 6-legged specimen.



The 6-legged specimen. Reasonably sure it is the Azolla weevil, *Stenopelmus rufinasus*, also from the US, which is reputedly a highly effective natural enemy of *Azolla filiculoides*. Not yet established whether it has been specifically introduced here.



Young Pike.



Any ideas?



Brown China-mark Moth. Thanks to Roy Hilton for the id.



Coot family



Coot feeding young monklets?



Altnats including new, young blood!

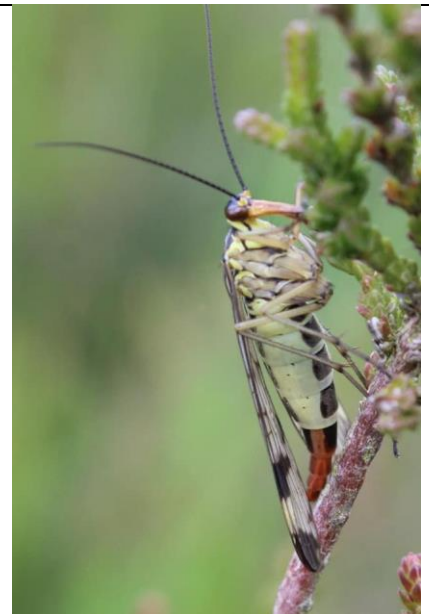
Sunday 7th July 2019 – Stretford Pond (Mike Pettipher)



Mike Pettipher: Attractive ripples - caused by this Semaphore Fly?

Mike Ashworth: Glad to see the Semaphore Flies are back again this year. What is the snail-shaped object or snail-shaped ripple at the bottom of the photo? Possibly caused by the two or three little 'buddies' in the vicinity? Amazing how often a close-up photo shows up fascinating activities at an even smaller scale - and so ad infinitum!

Monday 8th July 2019 – Danes Moss (Julie Samuels)



As Mike says ... there's always something 😊. Went to Danes Moss yesterday, looking for dragons which are usually abundant there, but I suspect it's still suffering as a result of last year's dessication. Only found a lone Emerald damselfly but there were several of these stunners. My book seems to have them as scorpion flies.

Sunday 21st July 2019 – Altnats Day Excursion to Ainsdale Dunes

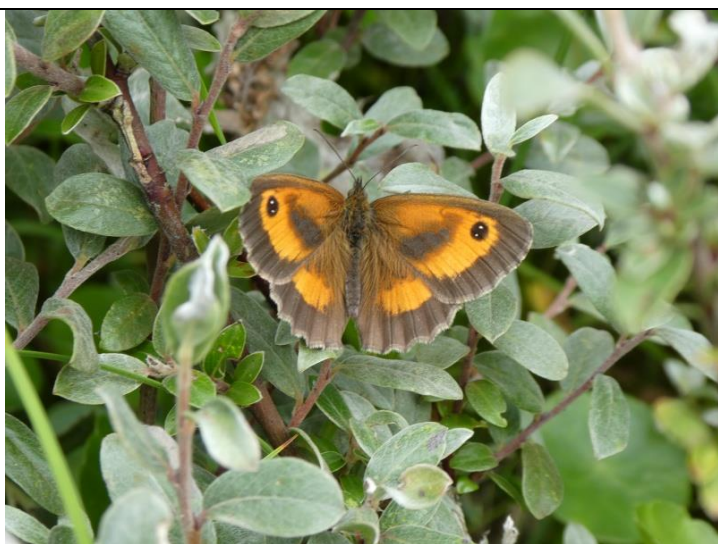
An excellent day around the dunes and Sands Lake. 27 insect species, 1 spider and 60 plant species recorded.



Sea Holly



Grass of Parnassus



Gatekeeper



Gall on Creeping Willow induced by sawfly
Eupontania viminalis.



One of the pools – used by dragonflies



A mating pair of Common Darters



Yellow-wort



6-spot Burnet Moth



Round-leaved Wintergreen



Marsh Helleborine



Mating pair of Soldier Beetles on Wild Parsnip



Labyrinth Spider



Hare Bells

Tuesday 13th August 2019 – Altnats Evening Walk to Dunham Park

A very pleasant evening. Surprising number of damselflies and dragonflies seen amongst the pool vegetation (see our Facebook pages for more details and better photos). Also many interesting plants in the pools, including Sweet Flag, Yellow Flag Iris, Marsh Pennywort and Gypsywort. A fox was seen in the park and numerous bats (assumed to be pipistrelle) on the track back to the Bollin.



Black-tailed Skimmer, female



Fallow Deer daily exercises



Marsh Pennywort



Diminutive flower of Marsh Pennywort



Blue-tailed Damselfly



Earth Ball